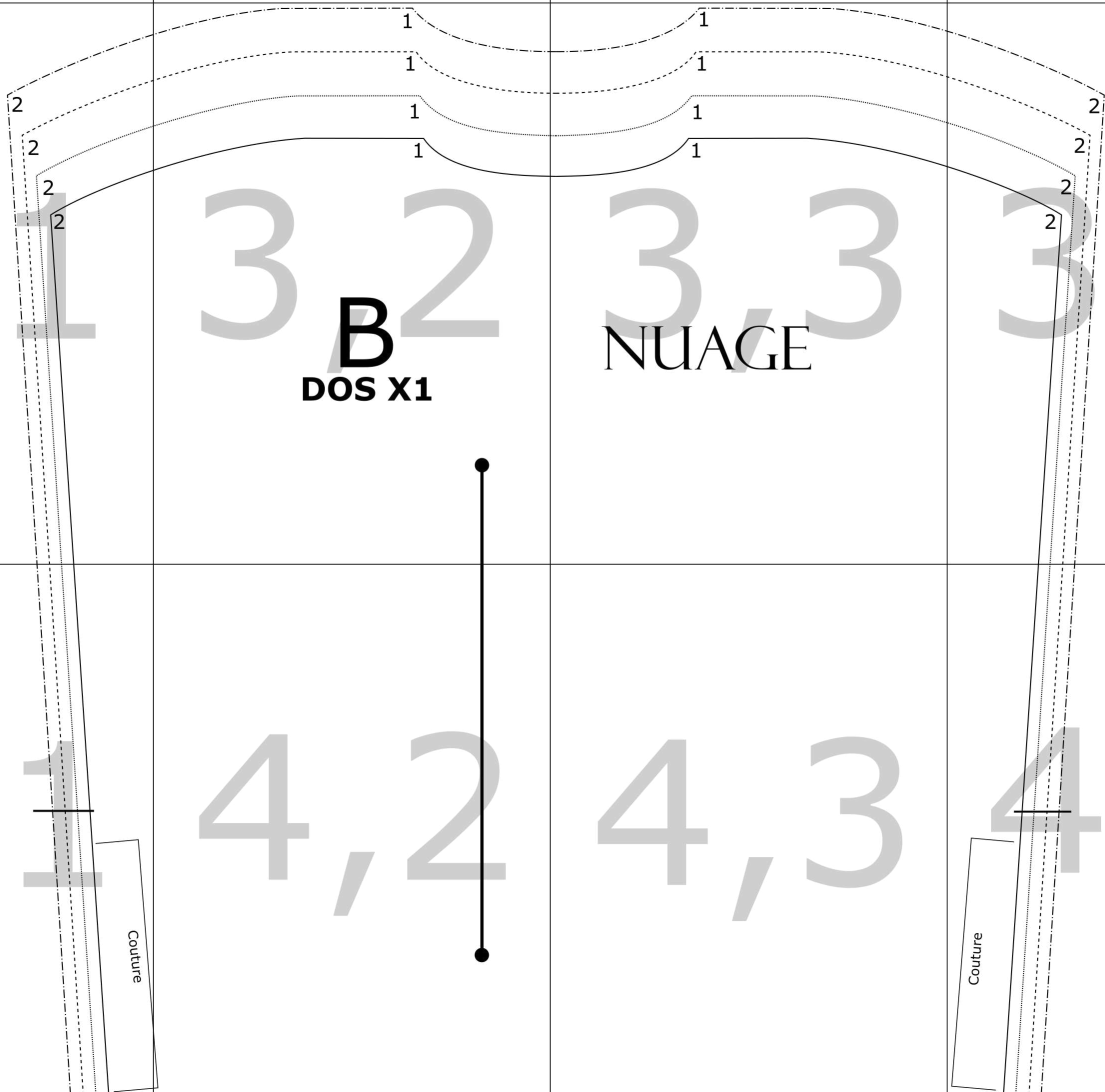
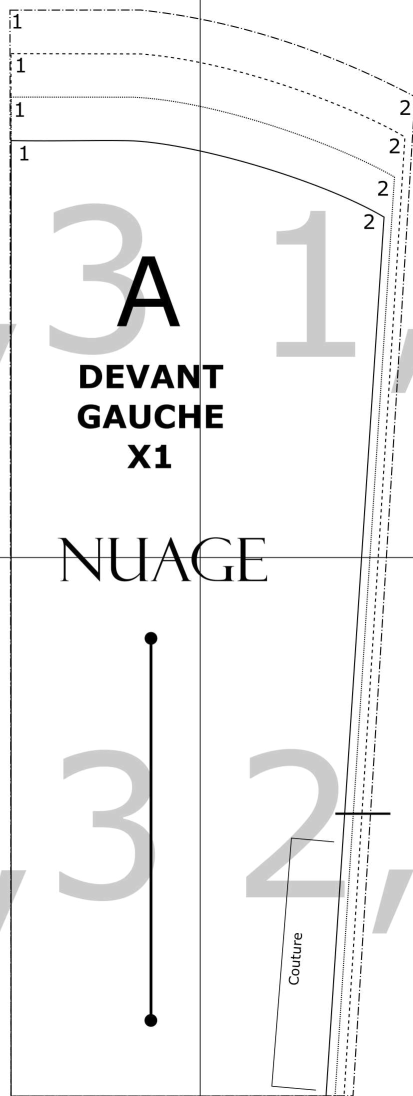
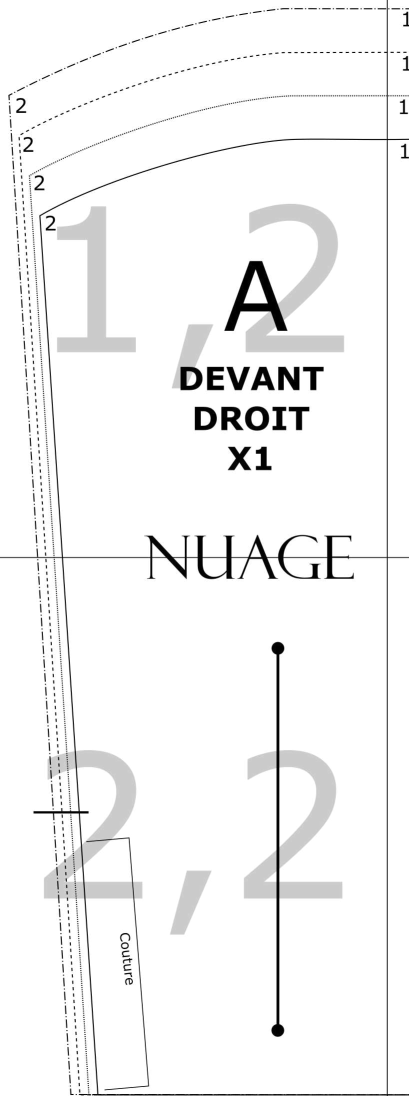




Tailles

- t.34-36
- t.38-40
- t.42-44
- t.46-48

droit-fil



5 cm

# Carré test

## Tailles

t.34-36

t.38-40

t.42-44

t.46-48

droit-fil



A vowel chart diagram illustrating the articulation of the French vowel 'A' (devant droit). The chart shows the oral cavity with the tongue position for the vowel. The number '2' is written in the upper left corner, indicating the tongue height. The number '1' is written in the lower left corner, indicating the tongue backness. The letter 'A' is written in the center, indicating the vowel quality. The text 'DEVANT DROIT' and 'X1' are written below the chart, indicating the vowel's position and its classification.

1 2

**DEVANT  
DROIT  
X1**

NUANCE

1

/

3A

DEVAN  
GAUCH  
X1

NU IAC

**TE**

**CE**

1

2

2

2

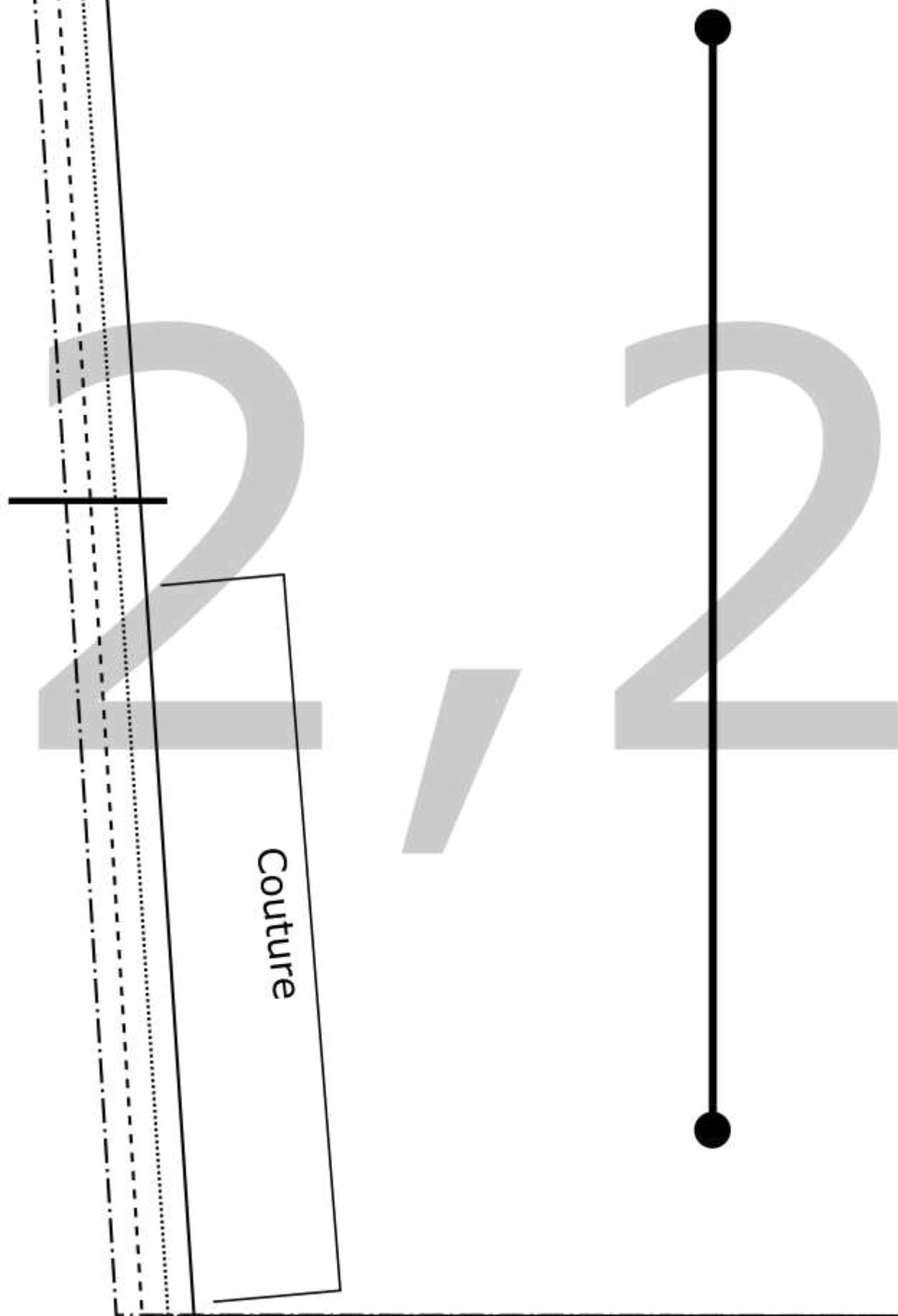
2

/

4

2,1

INUAGLE



2,3





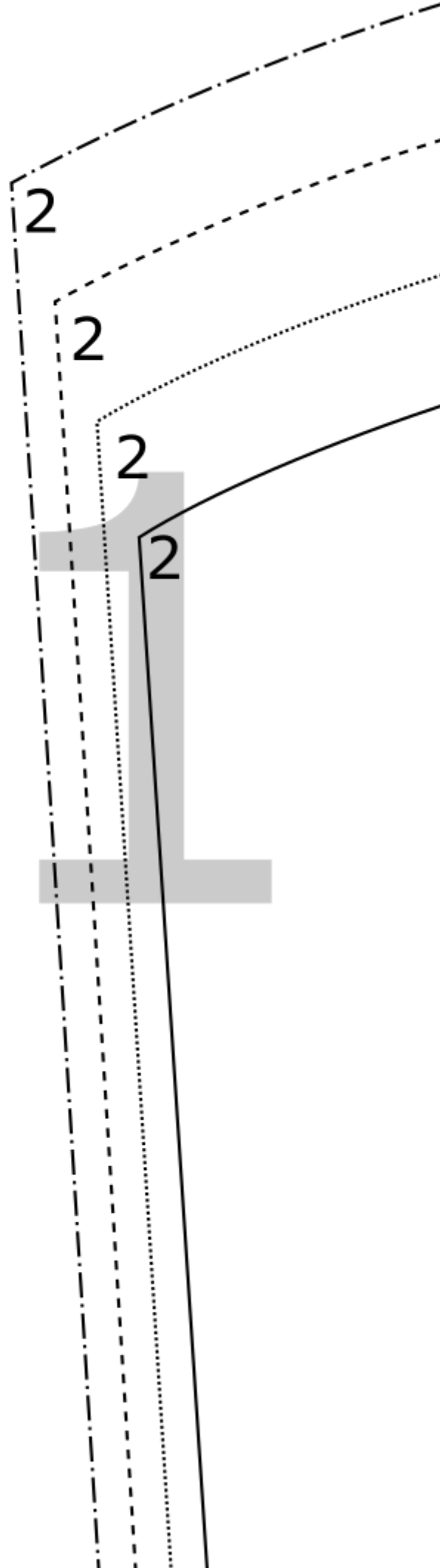
GC

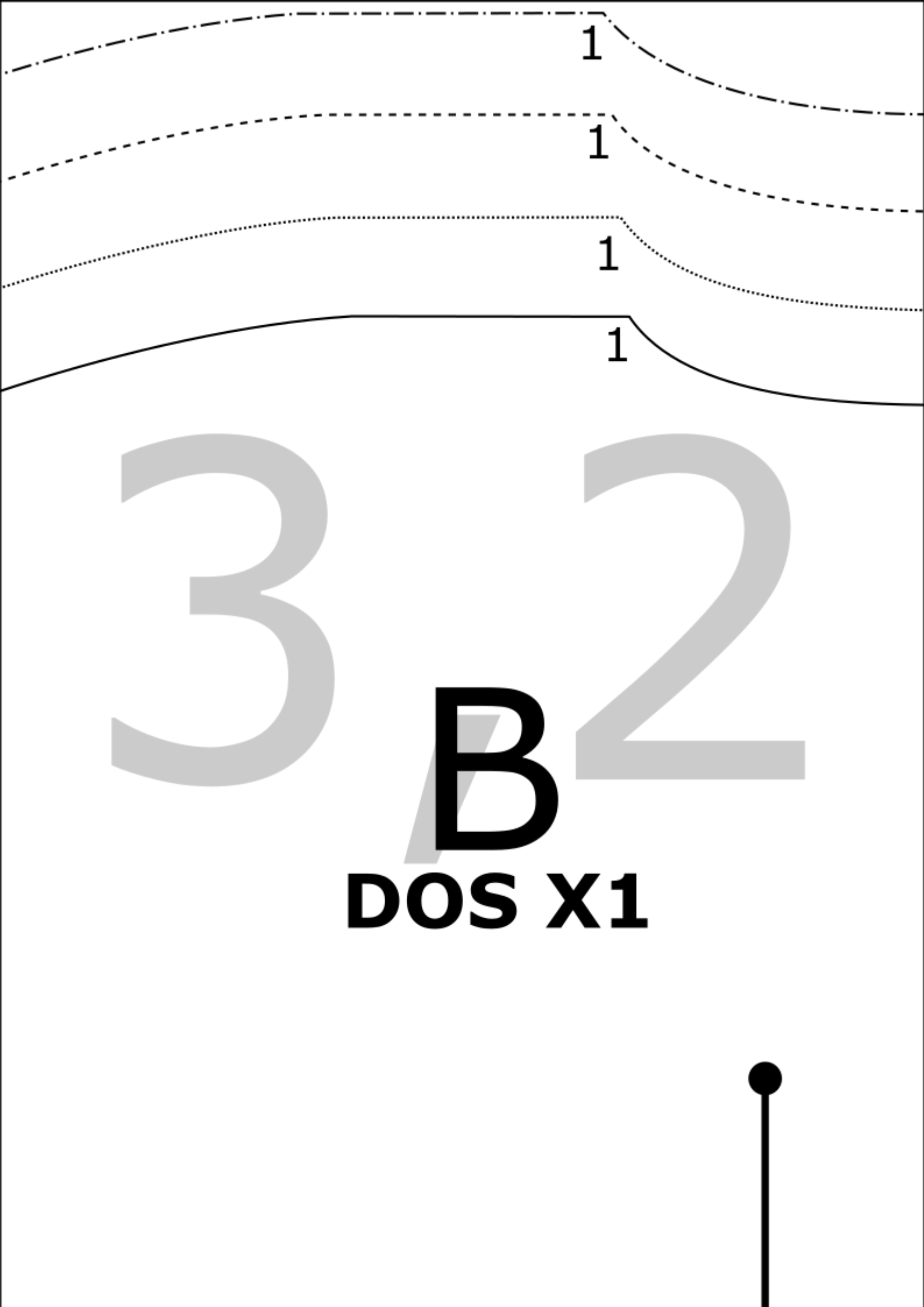
2,4

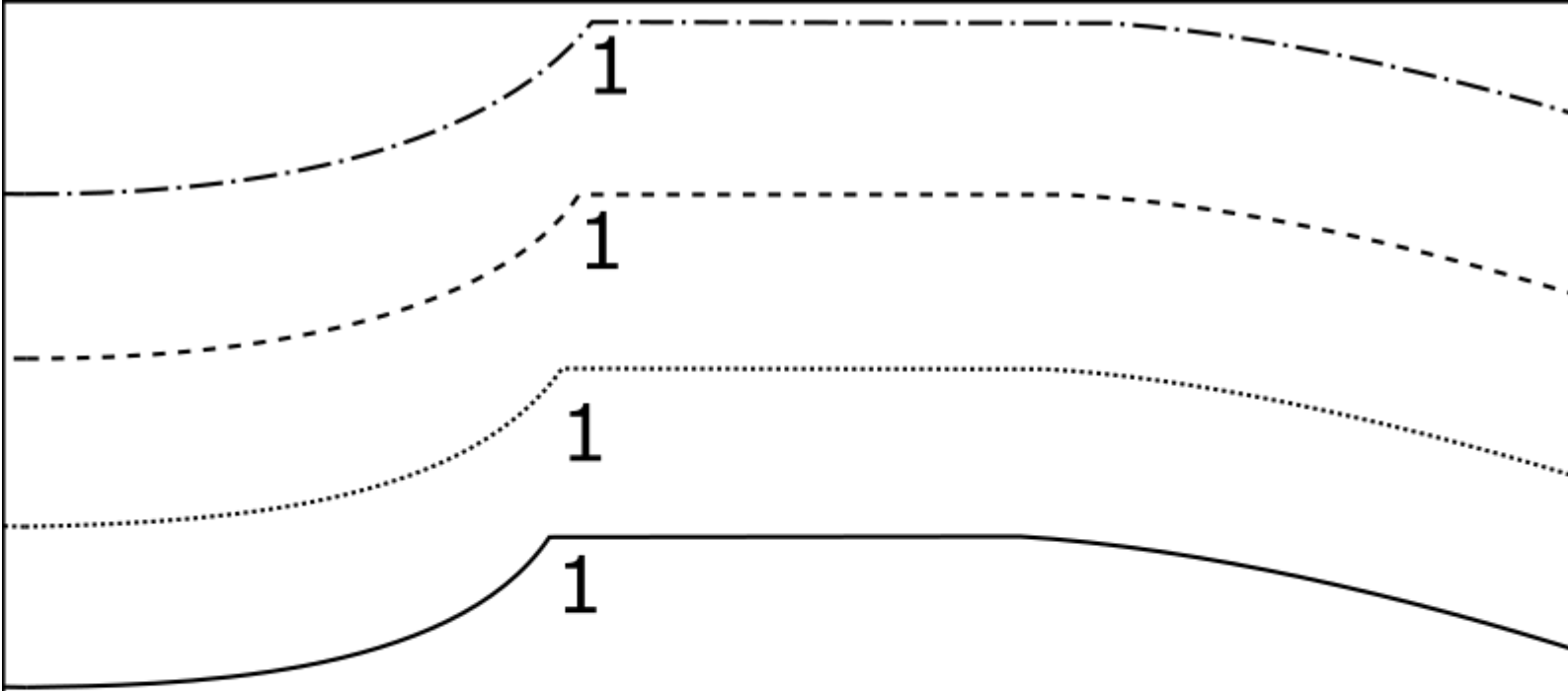
Couture

3

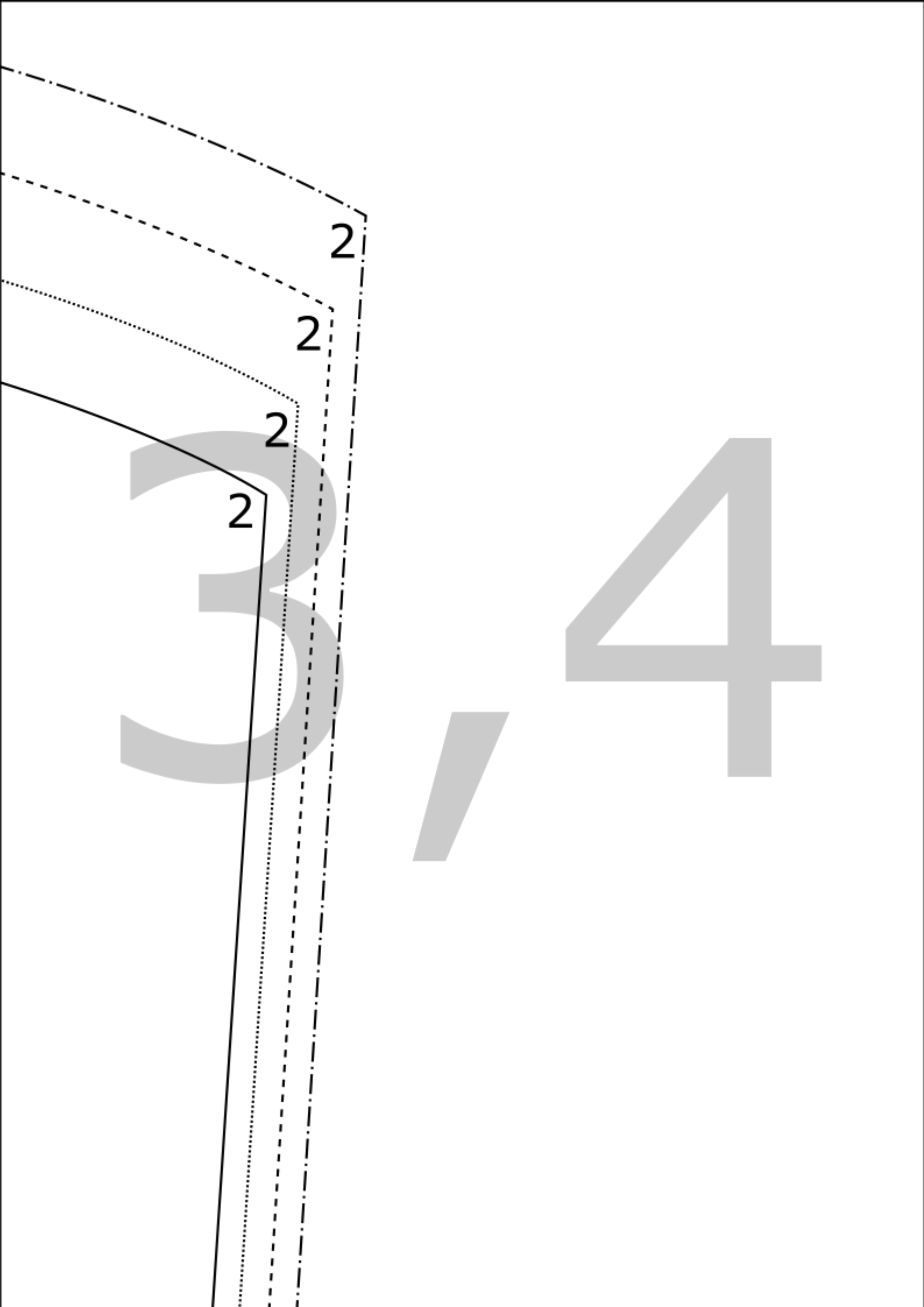
/



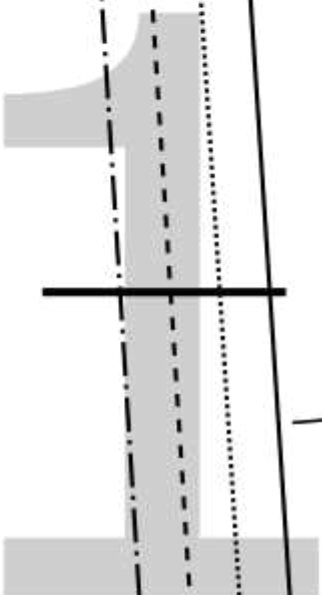




3/3  
NUAGE



4.1



Couture

4.2



4.3



Couture

4,4